



6-In-1 Memory Card Reader/Writer

DX-CR6N1

USER GUIDE

DX-CR6N1 Dynex 6-In-1 Memory Card Reader/Writer

Contents

Introduction	2
Important safety instructions	3
Card reader components	4
Connecting the card reader	5
Using your card reader	6
Troubleshooting	13
Specifications	15
Legal notices	16
One-year limited warranty	17

Introduction

Your card reader not only supports standard Secure Digital (SD), MultiMediaCard (MMC, MMC plus), xD Picture card, and Memory Stick (MS, MS Pro, MS Duo, MS Pro Duo) cards, it also supports the new high-speed memory cards such as Secure Digital High Capacity (SDHC) and Memory Stick PRO-HG Duo cards. It can be connected to any external USB port and does not require an external power adapter.

Features

Your card reader features:

- A small, palm-sized form factor
- USB-powered operation (an external power adapter is not needed)
- USB 2.0 compliant
- USB mass storage device class compliant
- Supports the xD-Picture v1.2 specification
- Supports the SDHC (SD v2.0) 4-bit specification
- Supports the Memory Stick Pro-HG 8-bit specification
- Hot-swappable, Plug & Play capability
- Media card icons for easy drive recognition

Important safety instructions

Before getting started, read these instructions and save them for later reference:

- Before you plug your card reader into your computer, read this *User Guide*.
- Do not drop or hit your card reader.
- Do not install your card reader in a location that is subject to strong vibrations.
- Do not disassemble or try to modify your card reader. Disassembly or modification may void your warranty and could damage your card reader, leading to a fire or electric shock.
- Do not store your card reader in a damp location. Do not allow moisture or liquids to drip into your card reader. Liquids can damage your card reader, leading to a fire or electric shock.

- Do not insert metal objects, such as coins or paper clips, into your card reader.
- Do not remove a card when the LED indicator shows data activity is in progress. You may damage the card or lose data stored on the card.
- Your card reader is for general computer use. Do not use your card reader in a computer that requires exceptional reliability, especially if a breakdown or malfunction of your card reader might jeopardize life or health, such as aerospace equipment, atomic power control systems, traffic-related equipment, transportation equipment, industrial robotics, combustion equipment, safety devices, and life-support systems.

Card reader components

Package contents

Make sure that you received:

- 6-in-1 card reader (1)
- Mini-USB 5-pin cable (1)
- Utility and Documentation CD (1)
- *Quick Setup Guide* (1)

Minimum system requirements

- IBM-compatible PC
- Pentium 133 MHz or higher processor
- CD drive
- 2 MB of hard drive space
- One available external USB port
- Windows® 2000, Windows® XP, Windows® Vista®, Windows® 7, or Mac OS 10.x or higher

Connecting the card reader

To connect your card reader, plug the small end of the included USB cable into your card reader and the other end into an available external USB port.

If your computer uses Windows 2000, Windows XP, Windows Vista, Windows 7, or Mac OS 10.x or higher, your computer automatically installs the correct driver, and new drive icons appear in *My Computer* and *Windows Explorer* (Windows) or on your desktop (Mac). If you want to customize the card reader drive icons, see “Customizing drive icons (Windows 2000, Windows XP, Windows Vista, and Windows 7 only)” on page 8.

Using your card reader

To access a media card using Windows:

- 1 Insert a card into the appropriate slot, as shown in “Card slots and LED” on page 7.
Caution: Cards must be inserted into the correct slot and in the correct direction, or you may damage the card or the slot.
- 2 Open the *My Computer* or *Windows Explorer* window, then double-click the drive icon for the slot you are using.
- 3 To access files and folders on the inserted card, use normal Windows procedures for opening, copying, pasting, or deleting files and folders.
- 4 When you have finished working with the files on a memory card, right-click the memory card icon, then click **Eject**. The light on the memory card reader turns off after the card is removed.

Caution: Do not remove memory cards when the data LED on the reader is flashing or blinking.

To access a media card using Macintosh:

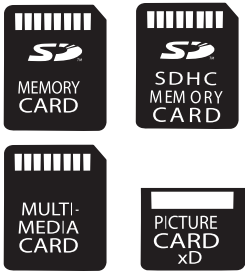
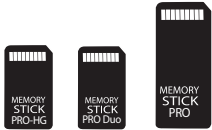
- 1 Insert a card into the appropriate slot, as shown in “Card slots and LED” on page 7. A new disk icon will appear on the desktop.

Caution: Cards must be inserted into the correct slot and in the correct direction. Otherwise you may damage the card or the slot.

- 2 When you have finished working with the files on a memory card, drag the disk icon to **Trash** or click the disk icon and select **Put Away** from the **File** menu.

Caution: Do not insert or remove memory cards while the light on the reader is flashing.

Card slots and LED

Feature	Description
<p>SD/SDHC/MMC/xD slot</p> 	<p>Insert Secure Digital card (SD), Secure Digital High Capacity card (SDHC), MultiMediaCard (MMC, MMCplus), or xD picture cards into the upper slot.</p> <p>Note: A memory card adapter is required for Mini SD, RS MMC, and Micro SD.</p> <p>Note: The arrow on your card indicates the direction the card should be inserted into the slot.</p>
<p>MS Pro-HG/MS Pro Duo/ MS Duo/MS Pro/MS slot</p> 	<p>Insert Memory Stick PRO-HG Duo, Memory Stick PRO Duo, Memory Stick PRO, Memory Stick DUO, or Memory Stick into the lower slot.</p> <p>Note: A memory card adapter is required for Memory Stick Micro (M2).</p> <p>Note: The arrow on your card indicates the direction the card should be inserted into the slot.</p>
<p>LED</p>	<p>Indicates when a slot is accessing a card.</p> <p>LED off—Your card reader is not being used.</p> <p>Power LED on (green)—Your card reader is turned on.</p> <p>Data LED on (green)—A card is inserted in the slot.</p> <p>LED flashing—Data is being transferred between the memory card and the computer.</p>

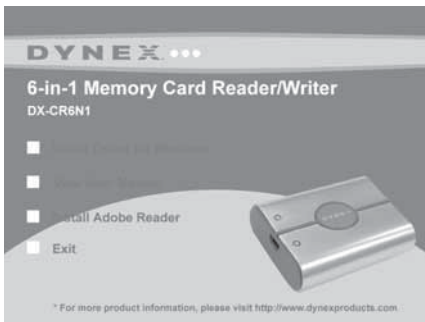
Customizing drive icons (Windows 2000, Windows XP, Windows Vista, and Windows 7 only)

To make the media card slots easier to recognize, you can customize the drive icons.

Note: Connect the card reader to the computer before installing the driver.

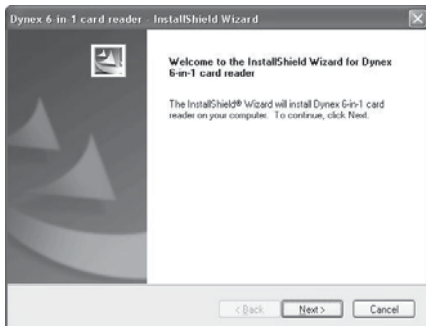
To customize the drive icons using Windows:

- 1 Save all files and close all programs.
- 2 Insert the included utility CD into your CD drive. The driver home page pops up automatically.

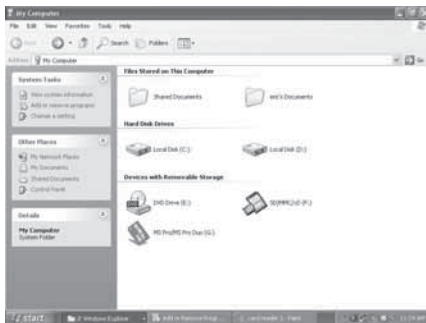


- 3 Click **Install driver for Windows**.

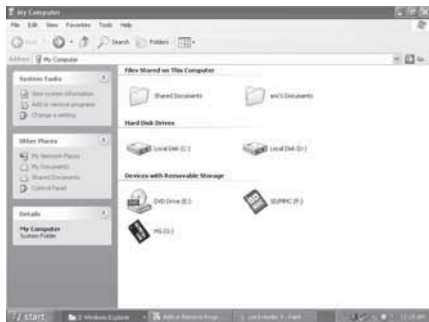
- 4 Click **Next**, then follow the on-screen instructions to install the driver.



After the driver installation is complete, Windows displays new drive icons for each of the slots instead of the standard Windows drive icons.



- 5 When Windows detects a card in a slot, the corresponding drive icon turns from grey to a color that indicates the card type.



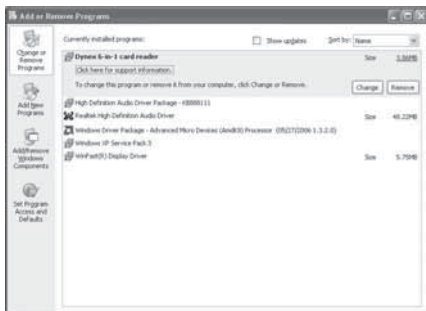
Uninstalling the software

To uninstall the software in Windows Vista or Windows 7:

- 1 Click **Start**, then click **Control Panel**.
- 2 Click **Uninstall a Program**.
- 3 Locate the software in the list, then click **Remove**.
- 4 Follow the on-screen instructions to uninstall the software.

To uninstall the software in Windows XP and Windows 2000:

- 1 Click **Start**, then click **Control Panel**.
- 2 Click **Add or Remove Programs**.



- 3 Locate the software in the list, then click **Remove**.
- 4 Follow the on-screen instructions to uninstall the software.

Formatting a memory card

If your computer has trouble recognizing a new memory card, format the memory card in your camera or by using the following procedure.

Caution: *Formatting a memory card will permanently delete all files on the card. Make sure that you copy any important files to a computer before formatting a memory card. Do not disconnect the card reader or remove the memory card while formatting is in progress.*

To format a memory card in Windows:

- 1 Click **Start**, then click **My Computer**.
- 2 Under **Removable Storage**, right-click the appropriate memory card icon.
- 3 Click **Format**.
- 4 Type a name into the **Volume Label** box, then press **Enter**. The name of your memory card appears next to the icon.
- 5 Click **Start**. A *Warning* dialog box opens.
- 6 Click **OK**. The *Format Complete* window opens.
- 7 Click **Close** to finish.

To format a memory card in Mac:

- 1 Click **Go**, then click **Utilities**.
- 2 Launch **Disk Utility**.
- 3 In the left hand column, select the memory card you want to erase, then click the **Erase** tab.
- 4 Select a volume format and name for the memory card.
- 5 Click **Erase**. A warning box opens.
- 6 Click **Erase**.

Troubleshooting

If memory cards do not appear in *My Computer* or *Windows Explorer* (Windows operating systems) or no icon appears on the desktop when a card is inserted into the reader (Mac operating systems), check the following:

- Make sure that the USB cable is fully connected to your card reader. Unplug and reconnect your card reader.
- Try a different memory card of the same type in the same slot. If a different memory card works, the original memory card should be replaced.
- Disconnect the cable from your card reader and shine a flashlight into the empty card slots. Look to see if any pin inside is bent, and straighten bent pins with the tip of a small, pointed instrument, such as a mechanical pencil or jeweler's screwdriver. Replace your memory card reader if a pin has bent so much that it touches another pin.

If memory cards appear in *My Computer* (Windows operating systems) or *Macintosh HD* (Mac operating systems) but errors occur when writing or reading, check the following:

- Make sure that the memory card is fully inserted into the slot.
- Try a different memory card of the same type in the same slot. If the different memory card works, the original memory card should be replaced.
- Some cards have a read/write security switch. Make sure that the security switch is set to **Write Enabled**.
- Make sure that the amount of data you attempted to store has not exceeded the capacity of the card.

- Inspect the ends of the memory cards for dirt or material closing a hole. Clean the contacts with a lint-free cloth and small amounts of isopropyl alcohol.
- If errors persist, replace the memory card.

If no icon appears when a card is inserted into the reader (Mac operating systems), check the following:

- The card may have been formatted in Windows FAT 32 format. Using a PC or digital device, reformat the card using the OS X-compatible FAT or FAT16 formats.

If you get an error message when installing the card reader software, check the following:

- Make sure that your card reader is connected to your computer.
- Make sure that only one card reader is connected to your computer. If other card readers are connected, unplug them before installing the software.

Specifications

Specifications are subject to revision or update without notice.

Chipset	Genesys
Supported file formats	FAT 12/16/32, NTFS
Memory card slots	Top slot: SDHC/SD/MMC/xD Lower slot: MS Pro-HG/MS Pro Duo/MS Duo/MS Pro/MS
Supported cards	Secure Digital card (SD, SDHC), MultiMediaCard (MMC, MMCplus), xD picture card, Media Stick (MS, MS Pro, MS Duo, MS Pro Duo, MS Pro-HG)
USB transfer speed	Up to 480 Mbps
Indicators	Power/USB link, card detect, and data activity
USB cable	USB A-type plug to mini-USB plug
OS support	Windows 2000, Windows XP, Windows Vista, Windows 7, Mac OS 10.x or higher
Dimensions (L × D × H)	2.4 × 1.83 × 0.68 inches (61 × 46.6 × 17.4 mm)
Operating temperature	32° F~104° F (0° C~40° C)
Storage temperature	-4° F~140° F (-20° C~60° C)
Humidity	0%~80% RH, non-condensing
Certification	FCC Class B, ICES-003

Legal notices

FCC statement

This equipment has been tested and found to comply with the limits for a Class B digital device, pursuant to Part 15 of the FCC Rules. These limits are designed to provide reasonable protection against harmful interference in a residential installation. This equipment generates, uses and can radiate radio frequency energy and, if not installed and used in accordance with the instructions, may cause harmful interference to radio communications. However, there is no guarantee that interference will not occur in a particular installation. If this equipment does cause harmful interference to radio or television reception, which can be determined by turning the equipment off and on, the user is encouraged to try to correct the interference by one or more of the following measures:

- Reorient or relocate the receiving antenna.
- Increase the separation between the equipment and receiver.
- Connect the equipment into an outlet on a circuit different from that to which the receiver is connected.
- Consult the dealer or an experienced radio/TV technician for help.

ICES - Canada's Interference-Causing Equipment Standards

This equipment complies with the applicable technical standards of ICES 003:1997 in accordance with the measurement procedures specified in CISPR22-96.

One-year limited warranty

Dynex Products (“Dynex”) warrants to you, the original purchaser of this new **DX-CR6N1** (“Product”), that the Product shall be free of defects in the original manufacture of the material or workmanship for a period of one (1) year from the date of your purchase of the Product (“Warranty Period”). This Product must be purchased from an authorized dealer of Dynex brand Products and packaged with this warranty statement. This warranty does not cover refurbished product. If you notify Dynex during the Warranty Period of a defect covered by this warranty that requires service, terms of this warranty apply.

How long does the coverage last?

The Warranty Period lasts for one year (365 days) from the date you purchased the Product. The purchase date is printed on the receipt you received with the Product.

What does this warranty cover?

During the Warranty Period, if the original manufacture of the material or workmanship of the Product is determined to be defective by an authorized Dynex repair center or store personnel, Dynex will (at its sole option): (1) repair the Product with new or rebuilt parts; or (2) replace the Product at no charge with new or rebuilt comparable products or parts. Products and parts replaced under this warranty become the property of Dynex and are not returned to you. If service of products and parts are required after the Warranty Period expires, you must pay all labor and parts charges. This warranty lasts as long as you own your Dynex Product during the Warranty Period. Warranty coverage terminates if you sell or otherwise transfer the Product.

How to obtain warranty service?

If you purchased the Product at a retail store location, take your original receipt and the Product to the store you purchased it from. Make sure that you place the Product in its original packaging or packaging that provides the same amount of protection as the original packaging. If you purchased the Product from an online web site, mail your original receipt and the Product to the address listed on the web site. Make sure that you put the Product in its original packaging or packaging that provides the same amount of protection as the original packaging.

To obtain in-home warranty service for a television with a screen 25 inches or larger, call 1-888-BESTBUY. Call agents will diagnose and correct the issue over the phone or will have an Dynex-approved repair person dispatched to your home.

Where is the warranty valid?

This warranty is valid only to the original purchaser of the Product in the United States, Canada, and Mexico.

What does the warranty not cover?

This warranty does not cover:

- Customer instruction
- Installation
- Set up adjustments
- Cosmetic damage
- Damage due to acts of God, such as lightning strikes
- Accident
- Misuse
- Abuse
- Negligence
- Commercial use
- Modification of any part of the Product
- Plasma display panel damaged by static (non-moving) images applied for lengthy periods (burn-in).

This warranty also does not cover:

- Damage due to incorrect operation or maintenance
- Connection to an incorrect voltage supply
- Attempted repair by anyone other than a facility authorized by Dynex to service the Product
- Products sold as is or with all faults
- Consumables, such as fuses or batteries
- Products where the factory applied serial number has been altered or removed

REPAIR REPLACEMENT AS PROVIDED UNDER THIS WARRANTY IS YOUR EXCLUSIVE REMEDY. DYNEX SHALL NOT BE LIABLE FOR ANY INCIDENTAL OR CONSEQUENTIAL DAMAGES FOR THE BREACH OF ANY EXPRESS OR IMPLIED WARRANTY ON THIS PRODUCT, INCLUDING, BUT NOT LIMITED TO, LOST DATA, LOSS OF USE OF YOUR PRODUCT, LOST BUSINESS OR LOST PROFITS. DYNEX PRODUCTS MAKES NO OTHER EXPRESS WARRANTIES WITH RESPECT TO THE PRODUCT, ALL EXPRESS AND IMPLIED WARRANTIES FOR THE PRODUCT, INCLUDING, BUT NOT LIMITED TO, ANY IMPLIED WARRANTIES OF AND CONDITIONS OF MERCHANTABILITY AND FITNESS FOR A PARTICULAR PURPOSE, ARE LIMITED IN DURATION TO THE WARRANTY PERIOD SET FORTH ABOVE AND NO WARRANTIES, WHETHER EXPRESS OR IMPLIED, WILL APPLY AFTER THE WARRANTY PERIOD. SOME STATES, PROVINCES AND JURISDICTIONS DO NOT ALLOW LIMITATIONS ON HOW LONG AN IMPLIED WARRANTY LASTS, SO THE ABOVE LIMITATION MAY NOT APPLY TO YOU. THIS WARRANTY GIVES YOU SPECIFIC LEGAL RIGHTS, AND YOU MAY ALSO HAVE OTHER RIGHTS, WHICH VARY FROM STATE TO STATE OR PROVINCE TO PROVINCE.

Contact Dynex:

For customer service please call 1-800-305-2204

www.dynexproducts.com

Distributed by Best Buy Purchasing, LLC

7601 Penn Avenue South, Richfield, Minnesota, U.S.A. 55423-3645

© 2009 Best Buy Enterprise Services, Inc.

All rights reserved. DYNEX is a trademark of Best Buy Enterprise Services, Inc.

Registered in some countries. All other products and brand names are trademarks of their respective owners.

DYNEX™

www.dynexproducts.com (800) 305-2204

Distributed by Best Buy Purchasing, LLC
7601 Penn Ave. South, Richfield, MN 55423 U.S.A.

© 2009 Best Buy Enterprise Services, Inc. All rights reserved.

DYNEX is a trademark of Best Buy Enterprise Services, Inc. Registered in some countries. All other products and brand names are trademarks of their respective owners.

09-0198
ENGLISH